

The FM:Interact™ Sustainability Module

Sustainability is top of mind these days in the building and FM industry. There is more pressure than ever to make your buildings and organization more environmentally friendly – but where do you start? What elements should you consider? How can you track the results of your projects? And how much is creating a more sustainable workplace going to cost?



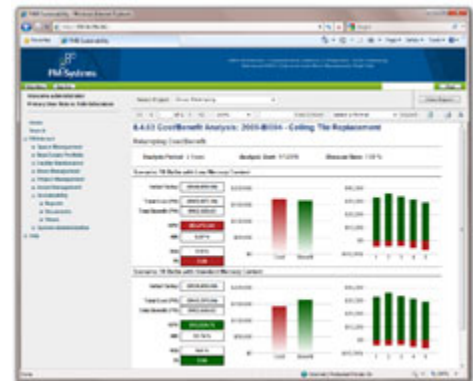
Track and manage your building's environmental performance.

The FM:Interact Sustainability Module can help you answer all these questions by bringing environmental and financial impacts into balance. From a standard Web browser you can manage critical information on energy performance or water usage, and sustainability projects like energy retrofits. Easy-to-read dashboards let you assess projects in a glance, and built-in certification standards for numerous programs help you plot your own green course. And because you have all the benefits of FM:Interact, it's easy to run cost analysis reports for your sustainability projects, or see which buildings are affected and which ones to target next.

Key Capabilities

The FM:Interact Sustainability Module lets you:

- analyze building environmental impacts (energy, water, greenhouse gas emissions, recycling, waste and others).
- forecast sustainability projects' financial impacts (net present value, internal rate of return, ROI, payback period) and environmental impacts.
- manage building assessments and certifications using rating systems like Leadership in Energy and Environmental Design (LEED), Green Globes, or BRE Environmental Assessment Method (BREEAM).
- engage occupants and management with enterprise access to sustainability information and dashboards.



Forecast the financial and environmental impact of your sustainability efforts.